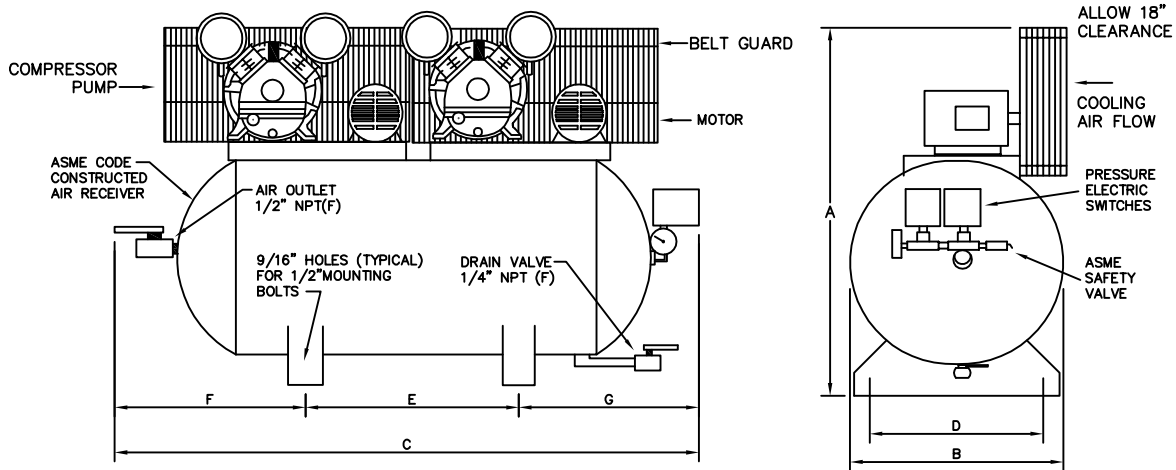


**AIR COMPRESSOR SPECIFICATION:**

The compressor unit shall incorporate a V belt driven, OMEGA heavy duty cast iron air cooled, reciprocating type air compressor complete with air intake filter silencers. The compressor pumps shall be mounted on a ASME code constructed air receiver. The compressor pumps will be equipped with an oil site gauge. The electric motors will be 1725 rpm, open drip proof with a service factor of 1.15 and have class B insulation. The compressor base plates will be slotted for belt adjustment and the drive equipped with a OSHA type, totally enclosed belt guards. The air receiver shall be complete with pressure switches, pressure gauge, ASME approved safety valve, check valves and ball type air outlet valve. A head release mechanism will be furnished with the compressor to permit load free motor starting at all times. The unit will be backed by a two year limited warranty against manufactures defects.



**PERFORMANCE DATA**

MODEL	HP	DELIVERY		PRESSURE SETTINGS		RECEIVER		COMPRESSOR			
		SCFM	L/S	PSIG	KPA	Gal US.	LITERS	PUMP	RPM	CYL	STGS
CC-DX-07560	.75	3.4	1.60	70-90	480-620	60	227	PK-50	694	V-2	1

**DIMENSIONAL DATA (inches)**

MODEL	A	B	C	D	E	F	G
CC-DX-07560	40	21	61	18.75	24	19	18

**WT. DISTRIBUTION (Lbs)**

FT.1	FT.2	FT.3	FT.4	TOTAL
88	133	94	120	435

**ELECTRICAL DATA (60Hz)**

HP.	APPROX. FULL LOAD AMPS					
	Single Phase		Three Phase			
	110V.	220V.	200V.	230V.	460V.	575V.
.75	10.0	5.0	2.6	2.4	1.2	1.1

BELT GUARD SIDE	
2	4
1	3

<b>OMEGA AIR COMPRESSORS</b>	<b>HVAC SERIES</b>	<b>3/4 HP TANK MOUNTED DUPLEX COMPRESSOR</b>	Print No: Dwg: Chk'd	ESJL33S-1 Scale: Not to. Wt Dist: +-5lbs
Typical only. Data & specifications may be subject to change. May not include accessory items for any particular order.			Project Reference:	