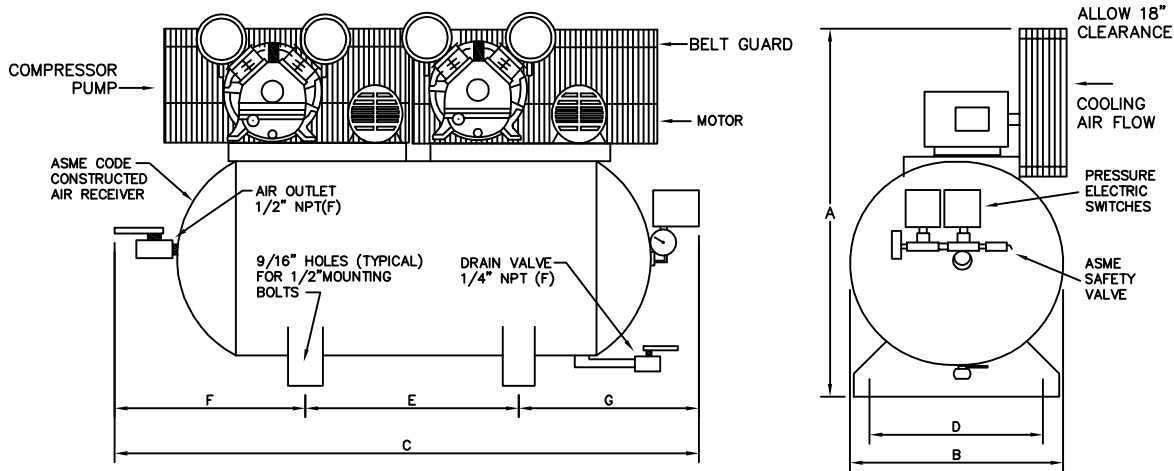


AIR COMPRESSOR SPECIFICATION:

The compressor unit shall incorporate a V belt driven, OMEGA heavy duty cast iron air cooled, reciprocating type air compressor complete with air intake filter silencers. The compressor pumps shall be mounted on a ASME code constructed air receiver. The compressor pumps will be equipped with an oil site gauge. The electric motors will be 1725 rpm, open drip proof with a service factor of 1.15 and have class B insulation. The compressor base plates will be slotted for belt adjustment and the drive equipped with a OSHA type, totally enclosed belt guards. The air receiver shall be complete with pressure switches, pressure gauge, ASME approved safety valve, check valves and ball type air outlet valve. A head release mechanism will be furnished with the compressor to permit load free motor starting at all times. The unit will be backed by a two year limited warranty against manufactures defects.



PERFORMANCE DATA

MODEL	HP	DELIVERY		PRESSURE SETTINGS		RECEIVER		COMPRESSOR			
		SCFM	L/S	PSIG	KPA	Gal US.	LITERS	PUMP	RPM	CYL	STGS
CC-DX-0530	.5	2.4	1.13	70-90	480-620	30	113	PK-50	509	V-2	1

DIMENSIONAL DATA (inches)

MODEL	A	B	C	D	E	F	G
CC-DX-0530	34	20	52	15	18	17	17

WT. DISTRIBUTION (Lbs)

FT.1	FT.2	FT.3	FT.4	TOTAL
70	107	74	98	349

ELECTRICAL DATA (60Hz)

HP.	APPROX. FULL LOAD AMPS					
	Single Phase		Three Phase			
	110V.	220V.	200V.	230V.	460V.	575V.
.50	8.0	4.0	2.2	2.0	1.0	.80

BELT GUARD SIDE	
2	4
1	3

OMEGA AIR COMPRESSORS	HVAC SERIES	1/2 HP TANK MOUNTED DUPLEX COMPRESSOR	Print No: Dwg: Chk'd	ESJL33S-1 Scale: Not to. Wt Dist: +-5lbs
Typical only. Data & specifications may be subject to change. May not include accessory items for any particular order.			Project Reference:	