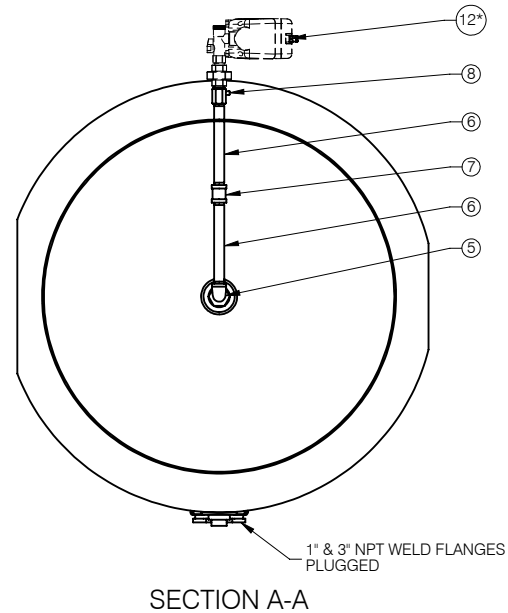


FACTORY INSTALLED BILL OF MATERIAL			
ITEM NO.	PART NUMBER	DESCRIPTION	QTY.
1	TA-9515	400 GAL VERT AIR RECEIVER 200PSI	1
2	LA-9444	DECAL LARGE DV SYSTEMS	1
3	LA-9452	100+ YEARS DECAL	1
4	LA-9426	DRAIN DAILY LABEL	1
5	SS-1073	STREET ELBOW 1/2"NPT	1
6	SS-2139	1/2 X 8 LONG GALV NIPPLE	2
7	SS-1313	1/2" COUPLING GALV	1
8	DSC-001924	BALL VALVE 1/2" NPT	1
AVAILABLE AS FIELD-INSTALLED OPTION			
9*	GA-9732	2.5" DRY 0-300PSI GAUGE BACK MNT	1
10*	TIA-6200**	SAFETY VALVE 200 PSI 765 SCFM MAX	1
11*	SS-1073	STREET ELBOW 1/2" NPT	1
12*	KK-9860	ZERO-LOSS AUTODRAIN 115V	1



NOTE:
 MAXIMUM WORKING PRESSURE:
 200 PSI AT 400°F
 MINIMUM WORKING TEMPERATURE:
 -20°F AT 200 PSI
 ASME STANDARD TANK
 C.R.N. & N.B. APPROVED
 APPROX. WEIGHT: 890 LBS.

FINISH:
 GREY PRIMER, PAINTED TANK OPTIONAL

*OPTIONAL PARTS ONLY

**SAFETY VALVE MUST MEET SYSTEM CAPACITY, SCFM MAY VARY DEPENDING ON INSTALLATION

REV.	DATE	REVISION DESCRIPTION	PCN NO.
B	2/08/13	FINISH SPEC UPDATED	---
A	7/06/11	GA-9732 AS SEPARATE SALE ITEM	11-15

IMPORTANT NOTE: This print is the confidential property of DV SYSTEMS, INC. It is not to be used or reproduced in any manner, nor submitted to other parties for examination without the prior approval of DV SYSTEMS, INC. DV SYSTEMS, INC. is continually trying to improve its products, specifications subject to change without notice.

ALL DIMENSIONS ARE IN INCHES
 FRACTIONAL DIMENSIONS: ±1/4
 DECIMAL DIMENSION: ±.25
 ANGLES: ±1°
 *UNLESS OTHERWISE SPECIFIED



NAME OF PROJECT				DESCRIPTION OF DRAWING		
VERTICAL AIR RECEIVER				400 GAL. 200 PSI AIR RECEIVER ASSEMBLY		
DRAWN BY				DRAWING NO.		SHT NO/REV.
LT		5/25/11	N.T.S	TA-400200		B